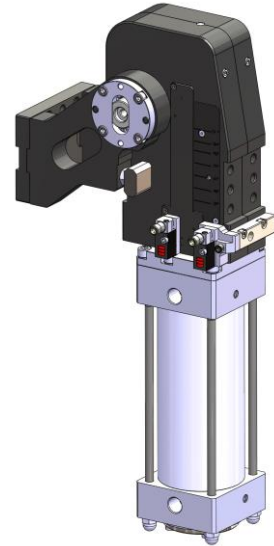


气动液压翻转单元 RFM/RF.2 Pneumo-hydraulic swivel unit RFM/RF.2

主要特点：

- 自锁系统(SBI)集在机械内(专利)
- 打开角度容易调整 (RFM)
- 控制集成在气缸内部的液压运动
- 带固定打开角度的 (RF) 版本
- 铝制壳体
- 曲柄连杆原理
- 钢制夹臂 和外部夹臂限位
- 2 个安装面 (正面和背面)
- 6 气源接口 (GAS 或者 NPT)
- 2 可调气动限位阻尼器
- 新型电感式限位开关 (接口 M12x1)



Main characteristics :

- Lock system (SBI) integrated into the head (patented)
- Opening angle easily adjustable (RFM)
- Hydraulic motion control integrated into pneumatic cylinder
- (RF) version with fixed opening angle
- Aluminum flanks
- Toggle action mechanism
- Steel arms and external arms stop
- 2 mounting areas (front and back)
- 6 feeding ports (GAS or NPT)
- 2 end strokes pneumatic cushioning adjustable
- New inductive proximity switch (connection M12x1)



[PDF](#)



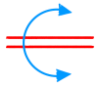
[3D Step](#)



[INDEX](#)

索引. Index.

页码 Page	描述 Description	
1	主要特点 / Main characteristics	
2	订货举例 / Ordering example	
3	尺寸页码 Dimensional page	
4		RFM100.2-121-V-PX-I-G-X
5		RFM100.2-121-V/LS-PX-I-G-X
6		RFM100.2-121-O-PX-I-G-X
7		RFM100.2-77-O/LS-PX-I-G-X
8		RFM125.2-129-V-PX-I-G-X
9		RFM125.2-129-V/LS-PX-I-G-X
10		RFM125.2-107-O-PX-I-G-X
11		RFM125.2-76-O/LS-PX-I-G-X
12		RFM160.2-129-V-PX-I-G-X
13		RFM160.2-129-V/LS-PX-I-G-X
14		RFM160.2-107-O-PX-I-G-X
15		RFM160.2-77-O/LS-PX-I-G-X
16		RFM200.2-129-V-PX-I-G-X
17		RFM200.2-129-V/LS-PX-I-G-X
18		RFM200.2-107-O-PX-I-G-X
19-22		图表和气路图 / Diagrams & plans
23-24		传感器原理图 / Diagrams for inductive sensors
25	气路图 / Pneumatic plan	
26-27	其他可选打开角度 (RF.2 系列) Additional opening angles (RF.2 type)	
28	换向 / 外部限位和导向 Shock absorber / external stops and guides	
29-31	备件 / Spare parts	
32	备注 / Contact	



订货举例

Ordering example

RFM125.2 - 91 - V - PX - I - G - X

RFM100.2
缸径 Ø100 mm.
Cylinder bore Ø100 mm.

RFM125.2
缸径 Ø125 mm.
Cylinder bore Ø125 mm.

RFM160.2
缸径 Ø160 mm.
Cylinder bore Ø160 mm.

RFM200.2
缸径 Ø200 mm.
Cylinder bore Ø200 mm.

RFMB (可选)
方形固定, 无外臂 硬停
Square fixing without external arms Hard stop



RFMB (可选)
带外臂的方形固定装置 硬质挡板
Square fixing with external arms Hard stop



打开角度
Opening angle

RFM100.2								
Ø	---	29°	45°	61°	77°	92°	104°	121°
Ø/LS	---	29°	45°	61°	77°	---	---	---
RFM125.2 / 160.2 / 200.2								
Ø	15°	30°	43°	61°	76°	91°	107°	---
Ø/LS	15°	30°	43°	61°	76°	---	---	---
V	15°	30°	43°	61°	76°	91°	107°	129°
V/LS	15°	30°	43°	61°	76°	91°	107°	129°

RF.2 系列单元的其他可调角度可以咨询。
(详细信息请参考第 26 - 27 页)
On request are available additional opening angles with the RF.2 (see page 26 - 27)

夹臂类型 (请参考尺寸页码):
Swivel arm type (see dimensional pages):

- Ø: 水平夹臂
horizontal arm
- V: 垂直夹臂
vertical arm
- Ø/LS: 水平对称夹臂
symmetric horizontal arm
- V/LS: 垂直对称夹臂
symmetric vertical arm

电感式传感器位置 (请参考第 23 页):
Inductive sensor position (see page 23):

- P0: 无传感器 / without
- PX: 传感器在 X 侧 / on the X side
- PY: 传感器在 Y 侧 / on the Y side
- PP: 在 X 和 Y 侧 / on the X and Y side



气源接口类型:
Feeding ports type:

G: G 接口...*
ports type G...*

N: *NPT 接口
ports type ...*NPT

电感式传感器类型:
Inductive sensor type:

I: VEP 带红色 LED (标准)
VEP with red LED (standard)

P: Pepperl+Fuchs 带红色 LED
Pepperl & Fuchs with red LED

气源接口位置和缓冲调整位置:
Feeding ports position and cushion adjustment:



X: 在 X 方向(左)
on the X side (left)

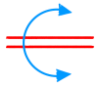
Y: 在 Y 方向(右)
on the Y side (right)

W: 在 W 方向(前)
on the W side (front)

Z: 在 Z 方向(后)
on the Z side (rear)

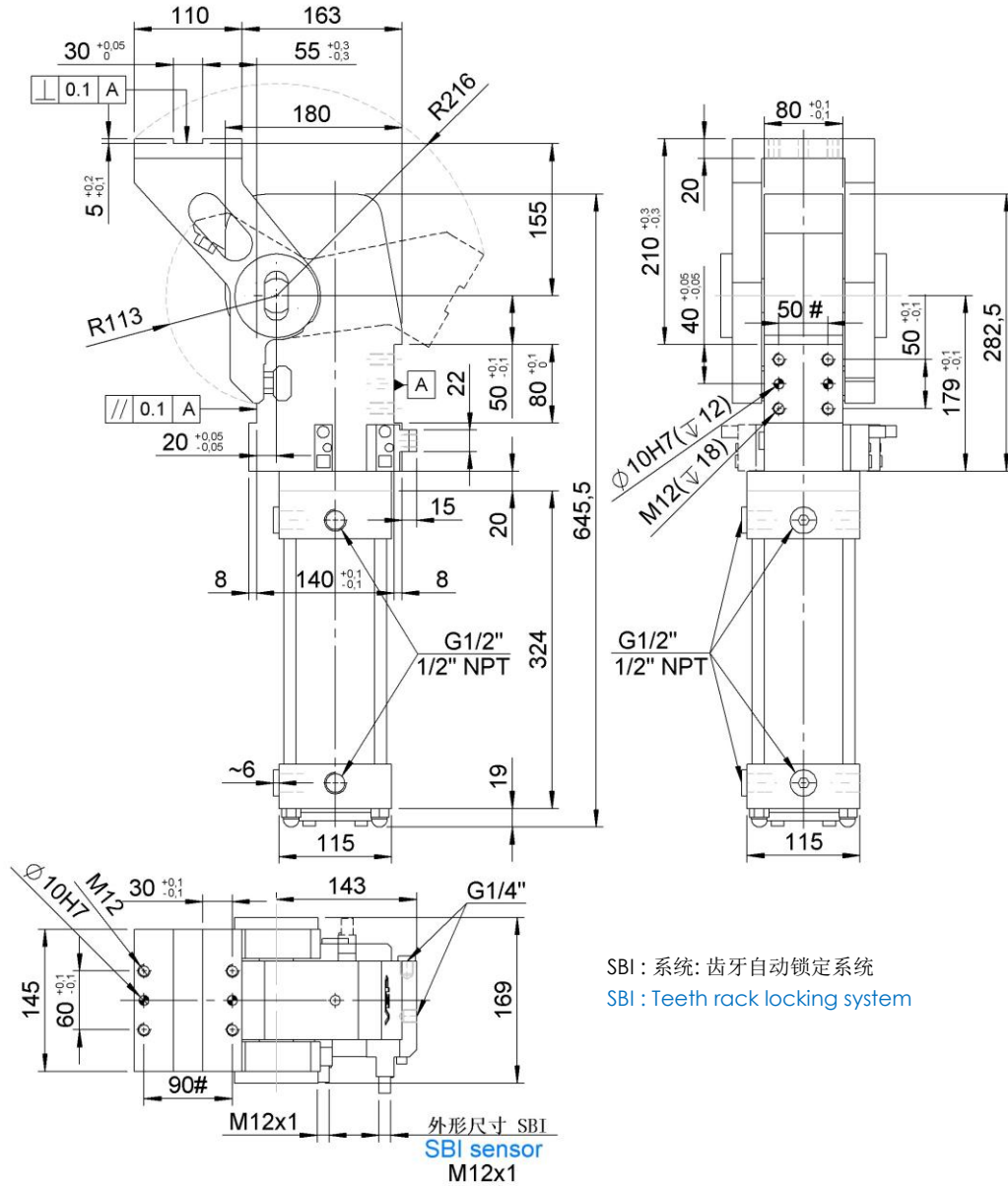
- 气源接口 / air connection
- 气源接口带堵头
air connection with plug
- 缓冲调整 / cushion adjustment

备注
传感器锁紧系统(SBI)总在左侧 (PX)
Note
SBI lock system sensor is always on the left side (PX)



RFM100.2-121-O-PX-I-G-X

翻转单元, D.100, SBI 锁定系统, 打开角度可调, 标准水平夹臂.
Swivel unit, D.100, SBI lock, Vario Op. Angle, Std. Horizontal



SBI : 系统: 齿牙自动锁定系统
SBI : Teeth rack locking system

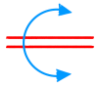
公差 : 定位销孔 : ±0.02 - 螺纹孔 : ±0.1 / # Tolerances : dowel holes ± 0.02 - screw holes ± 0.1

类型 Type	缸径 Cylinder bore	保持力 Holding moment	重量 Weight	工作气压 Working pressure	打开角度 Opening angle	耗气量 (5 bar) Air consumption (5 bar)
	[mm.]	[Nm]	[Kg]	[bar]	[°]	[l]
RFM100.2-121-O	100	2000	~ 30	4 - 8	29°-45°-61°-77° 92°-104°-121°	14,3

最大负载扭矩 (5 bar)
Max. torque by load (5 bar)

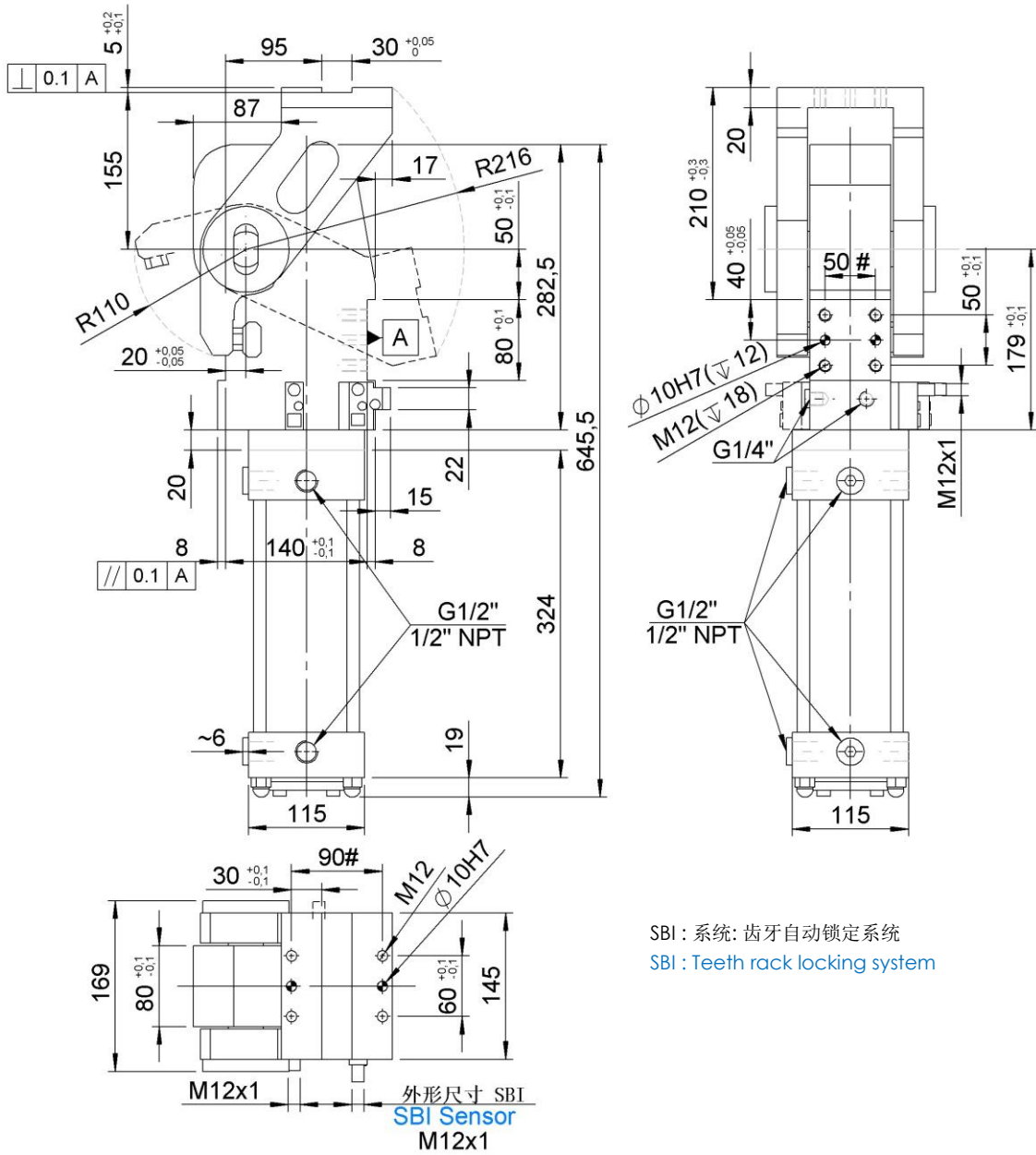
打开角度 ≤ 92°
Opening angle ≤ 92° **150 Nm**

打开角度 > 92° / ≤ 121°
Opening angle > 92° / ≤ 121° **110 Nm**



RFM100.2-77-O/LS-PX-I-G-X

翻转单元, D.100, SBI 齿牙锁紧系统, 打开角度可调, 标准水平对称夹臂.
Swivel unit, D.100, SBI lock, Vario Op. Angle, Std. symm. horizontal



SBI : 系统: 齿牙自动锁定系统
SBI : Teeth rack locking system

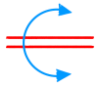
公差: 定位销孔: ±0.02 - 螺纹孔: ±0.1 / # Tolerances: dowel holes ±0.02 - screw holes ±0.1

类型 Type	缸径 Cylinder bore	保持力 Holding moment	重量 Weight	工作气压 Working pressure	打开角度 Opening angle	耗气量 (5 bar) Air consumption (5 bar)
	[mm.]	[Nm]	[Kg]	[bar]	[°]	[l]
RFM100.2-77-O/LS	100	2000	~ 30	4 - 8	29°-45°-61°-77°	10,3

最大负载扭矩 (5 bar)
Max. torque by load (5 bar)

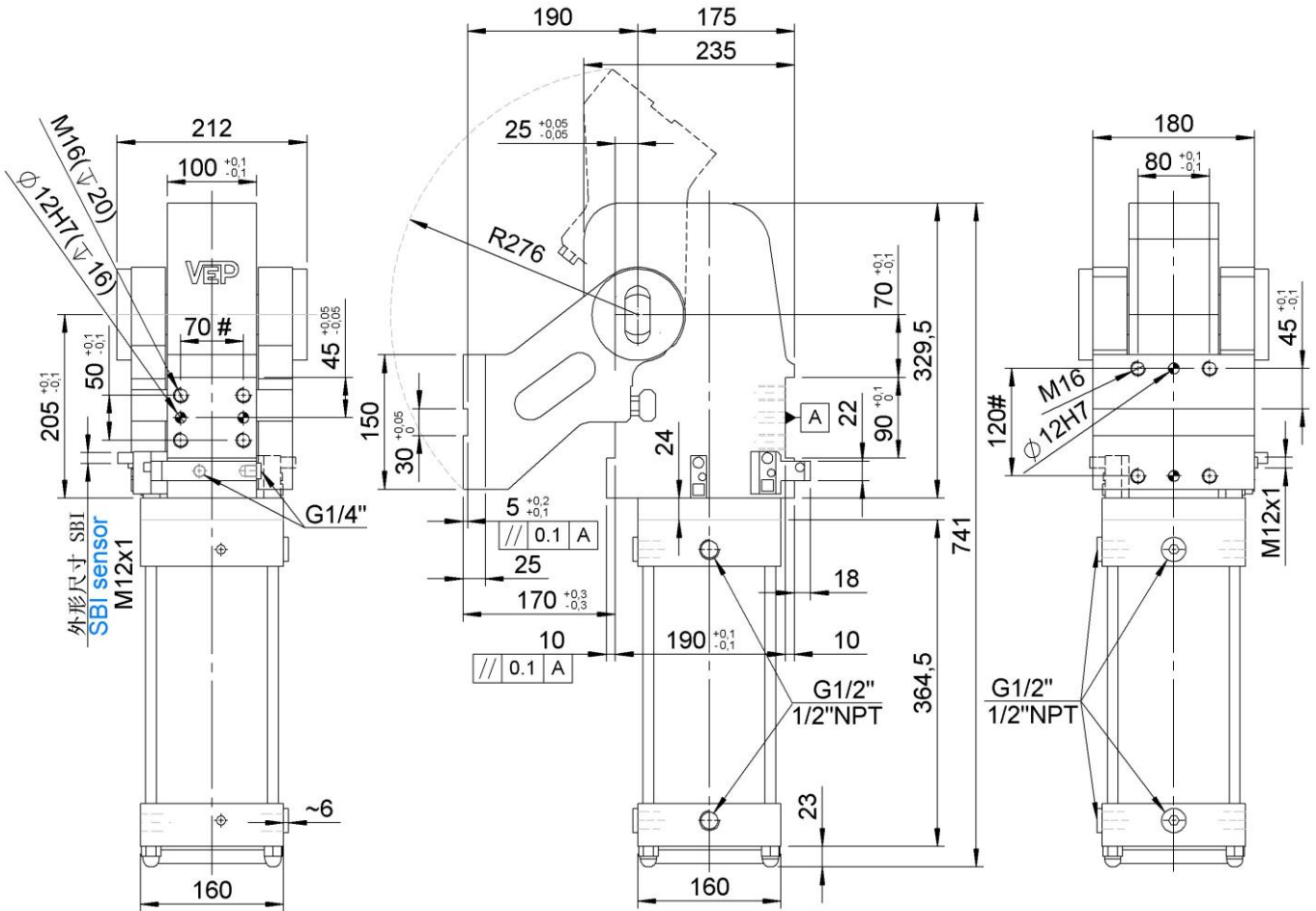
打开角度 ≤ 92°
Opening angle ≤ 92°

150 Nm



RFM125.2-129-V-PX-I-G-X

翻转气缸, D.125, SBI 齿牙锁紧系统, 打开角度可调, 标准垂直夹臂
Swivel unit, D.125, SBI lock, Vario Op. Angle, Std. vertical



SBI : 系统: 齿牙自动锁定系统
SBI : Teeth rack locking system

公差 : 定位销孔 : ± 0.02 - 螺纹孔 : ± 0.1 / # Tolerances : dowel holes ± 0.02 - screw holes ± 0.1

类型 Type	缸径 Cylinder bore	保持力 Holding moment	重量 Weight	工作气压 Working pressure	打开角度 Opening angle	耗气量 (5 bar) Air consumption (5 bar)
	[mm.]	[Nm]	[Kg]	[bar]	[°]	[l]
RFM125.2-129-V	125	3500	~ 64	4 - 8	15°-30°-43°-61° 76°-91°-107°-129°	24,4

最大负载扭矩 (5 bar)

Max. torque by load (5 bar)

打开角度 $\leq 92^\circ$ **240 Nm**

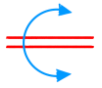
Opening angle $\leq 92^\circ$

打开角度 $> 92^\circ / \leq 121^\circ$ **180 Nm**

Opening angle $> 92^\circ / \leq 121^\circ$

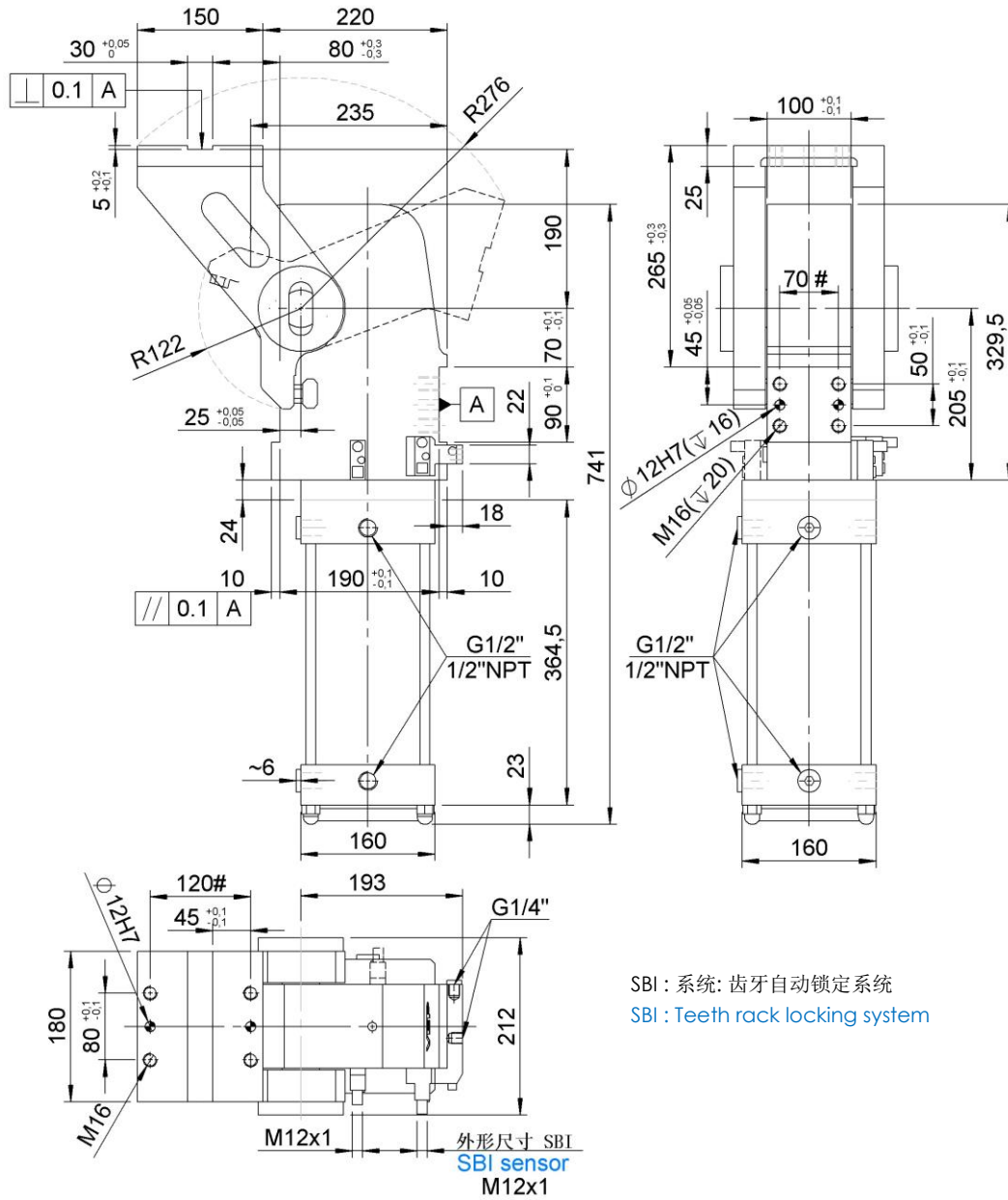
打开角度 $> 121^\circ$ **65 Nm**

Opening angle $> 121^\circ$



RFM125.2-107-O-PX-I-G-X

翻转单元, D.125, SBI 齿牙锁紧系统, 打开角度可调, 标准水平夹臂
Swivel unit, D.125, SBI lock, Vario Op. Angle, Std. Horizontal



SBI : 系统: 齿牙自动锁定系统
SBI : Teeth rack locking system

公差 : 定位销孔 : ± 0.02 - 螺纹孔 : ± 0.1 / # Tolerances : dowel holes ± 0.02 - screw holes ± 0.1

类型 Type	缸径 Cylinder bore	保持力 Holding moment	重量 Weight	工作气压 Working pressure	打开角度 Opening angle	耗气量 (5 bar) Air consumption (5 bar)
	[mm.]	[Nm]	[Kg]	[bar]	[°]	[l]
RFM125.2-107-O	125	3500	~ 64	4 - 8	15°-30°-43°-61° 76°-91°-107°	22,4

最大负载扭矩 (5 bar)

Max. torque by load (5 bar)

打开角度 ≤ 92°

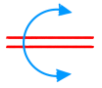
240 Nm

Opening angle ≤ 92°

打开角度 > 92° / ≤ 121°

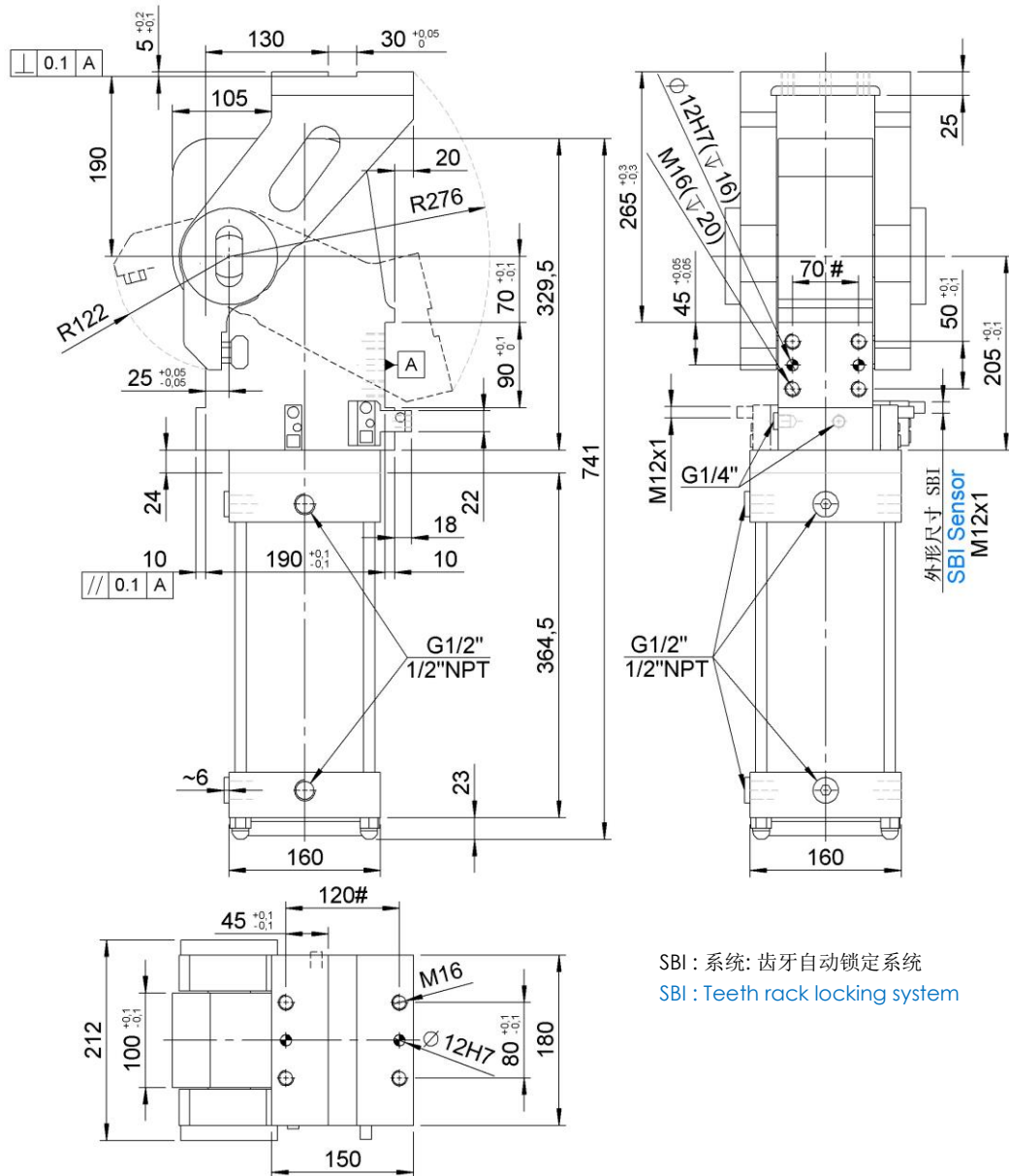
180 Nm

Opening angle > 92° / ≤ 121°



RFM125.2-76-O/LS-PX-I-G-X

翻转单元, D.125, SBI 齿牙锁紧系统, 打开角度可调, 标准水平对称夹臂
Swivel unit, D.125, SBI lock, Vario Op. Angle, Std. symm. horizontal



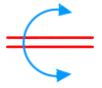
SBI : 系统: 齿牙自动锁定系统
SBI : Teeth rack locking system

公差 : 定位销孔 : ±0.02 - 螺纹孔 : ±0.1 / # Tolerances : dowel holes ±0.02 - screw holes ±0.1

类型 Type	缸径 Cylinder bore	保持力 Holding moment	重量 Weight	工作气压 Working pressure	打开角度 Opening angle	耗气量 (5 bar) Air consumption (5 bar)
	[mm.]	[Nm]	[Kg]	[bar]	[°]	[l]
RFM125.2-76-O/LS	125	3500	~ 64	4 - 8	15°-30°-43° 61°-76°	18,0

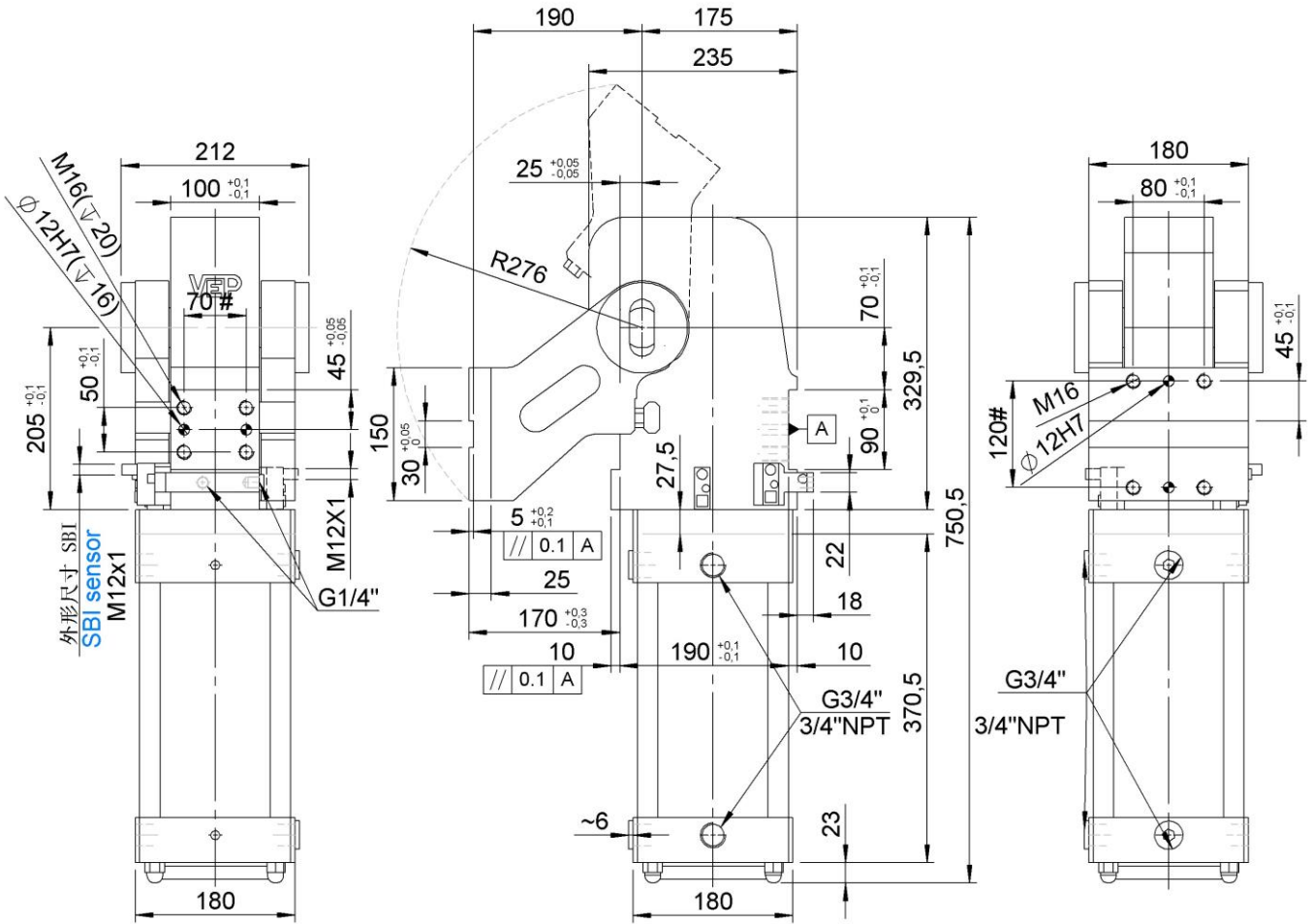
最大负载扭矩 (5 bar)
Max. torque by load (5 bar)

打开角度 ≤ 92°
Opening angle ≤ 92° **240 Nm**



RFM160.2-129-V-PX-I-G-X

翻转单元, D.160, SBI 齿牙锁紧系统, 打开角度, 标准垂直夹臂
Swivel unit, D.160, SBI lock, Vario Op. Angle, Std. vertical



SBI : 系统: 齿牙自动锁定系统
SBI : Teeth rack locking system

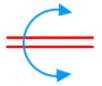
公差 : 定位销孔 : ± 0.02 - 螺孔 : ± 0.1 / # Tolerances : dowel holes ± 0.02 - screw holes ± 0.1

类型 Type	缸径 Cylinder bore	保持力 Holding moment	重量 Weight	工作气压 Working pressure	打开角度 Opening angle	耗气量 (5 bar) Air consumption (5 bar)
	[mm.]	[Nm]	[Kg]	[bar]	[°]	[l]
RFM160.2-129-V	160	3500	~ 77	4 - 8	15°-30°-43°-61° 76°-91°-107°-129°	42,2

最大负载扭矩 (5 bar)

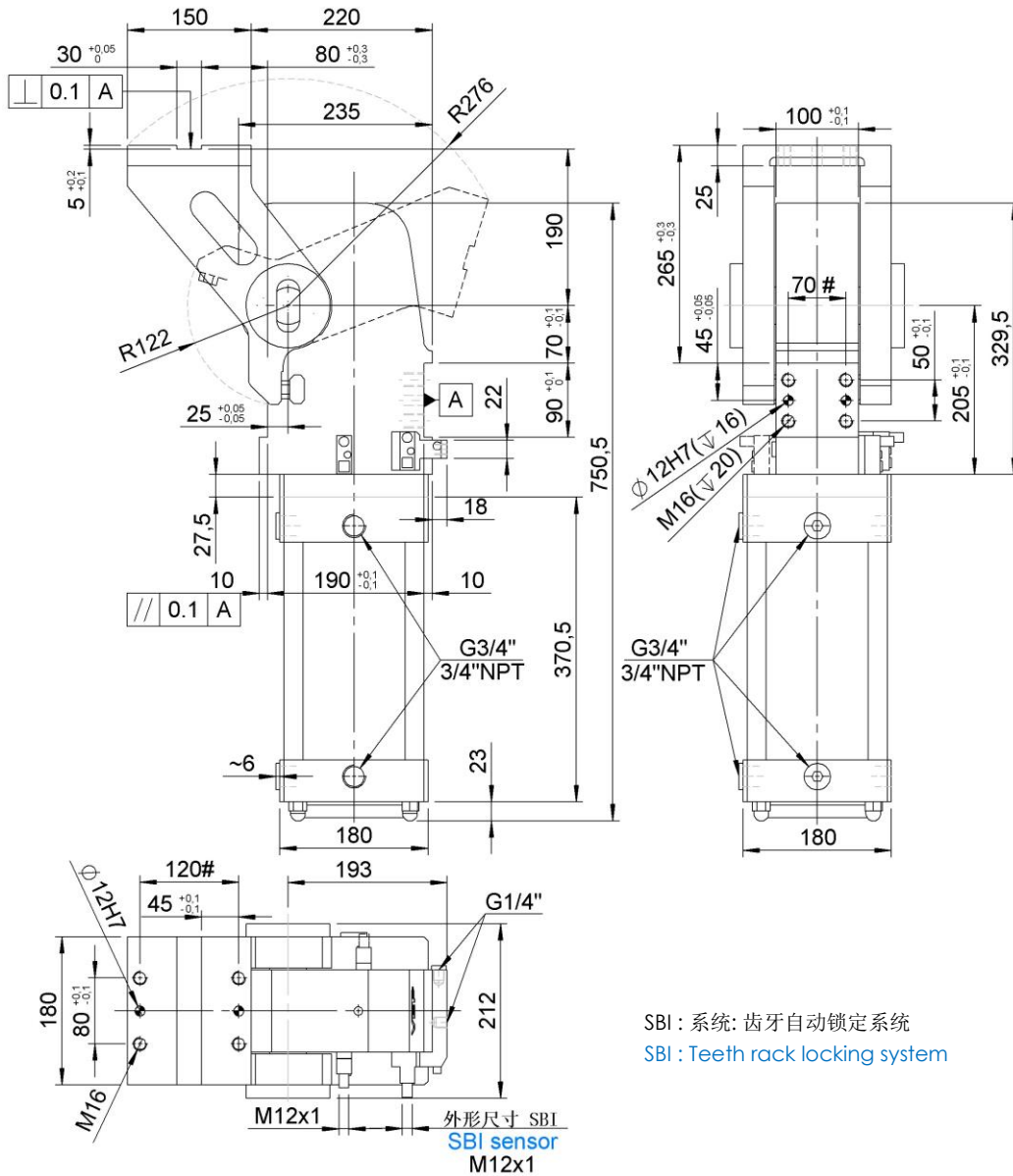
Max. torque by load (5 bar)

打开角度 $\leq 92^\circ$ **410 Nm**
Opening angle $\leq 92^\circ$
打开角度 $> 92^\circ / \leq 121^\circ$ **300 Nm**
Opening angle $> 92^\circ / \leq 121^\circ$
打开角度 $> 121^\circ$ **100 Nm**
Opening angle $> 121^\circ$



RFM160.2-107-O-PX-I-G-X

翻转气缸, D.160, SBI 齿牙锁紧系统, 打开角度可调, 标准水平夹臂
Swivel unit, D.160, SBI lock, Vario Op. Angle, Std. Horizontal



SBI : 系统: 齿牙自动锁定系统
SBI : Teeth rack locking system

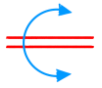
公差 : 定位销孔 : ± 0.02 - 螺纹孔 : ± 0.1 / # Tolerances : dowel holes ± 0.02 - screw holes ± 0.1

类型 Type	缸径 Cylinder bore	保持力 Holding moment	重量 Weight	工作气压 Working pressure	打开角度 Opening angle	耗气量 (5 bar) Air consumption (5 bar)
	[mm.]	[Nm]	[Kg]	[bar]	[°]	[l]
RFM160.2-107-O	160	3500	~ 77	4 - 8	15°-30°-43°-61° 76°-91°-107°	38,5

最大负载扭矩 (5 bar)
Max. torque by load (5 bar)

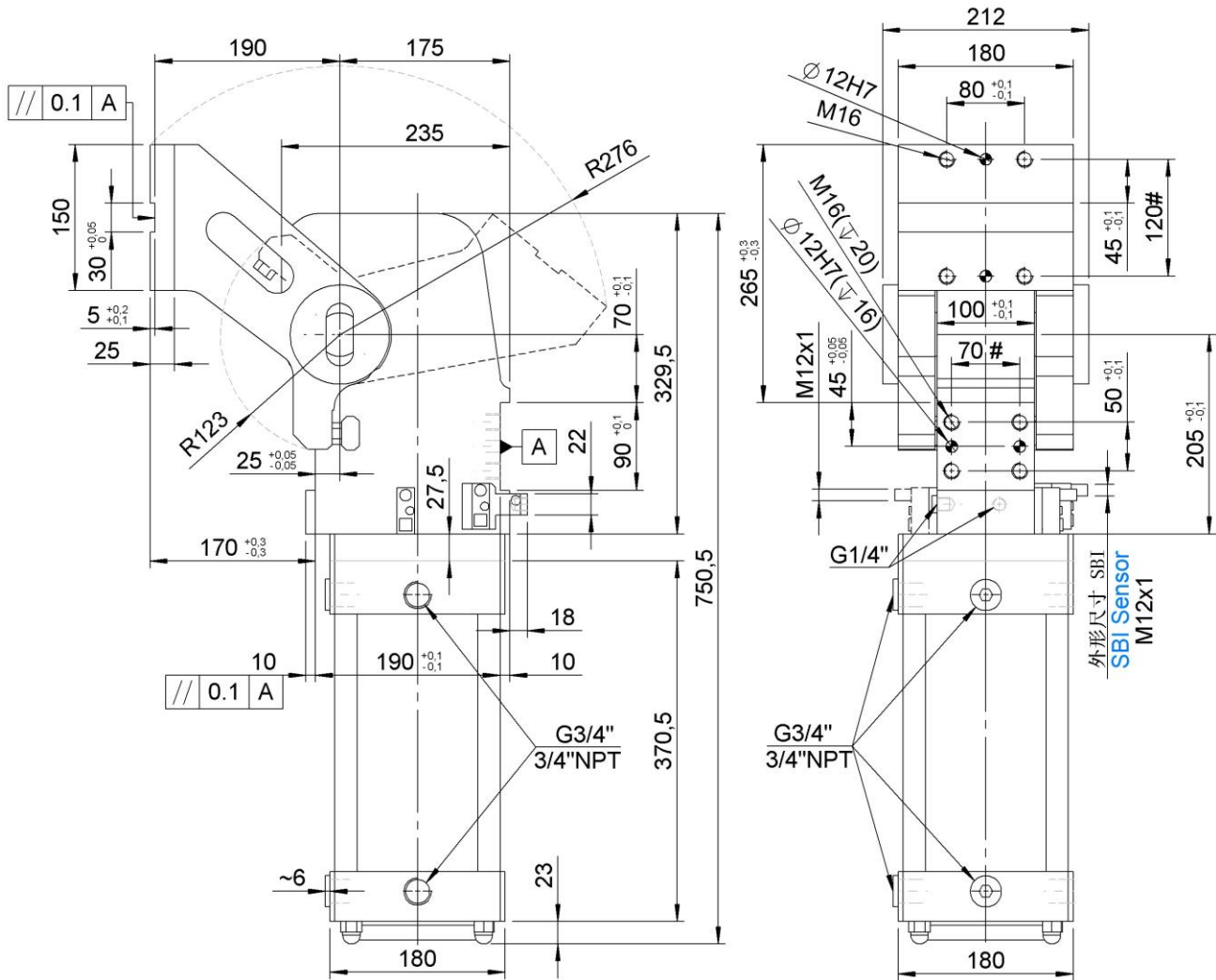
打开角度 $\leq 92^\circ$
Opening angle $\leq 92^\circ$ **410 Nm**

打开角度 $> 92^\circ / \leq 121^\circ$
Opening angle $> 92^\circ / \leq 121^\circ$ **300 Nm**



RFM160.2-129-V/LS-PX-I-G-X

翻转单元, D.160, SBI 齿牙锁紧系统, 打开角度, 标准垂直对称夹臂
Swivel unit, D.160, SBI lock, Vario Op. Angle, Std. symm. vertical



SBI : 系统: 齿牙自动锁定系统
SBI : Teeth rack locking system

公差 : 定位销孔 : ± 0.02 - 螺纹孔 : ± 0.1 / # Tolerances : dowel holes ± 0.02 - screw holes ± 0.1

类型 Type	缸径 Cylinder bore	保持力 Holding moment	重量 Weight	工作气压 Working pressure	打开角度 Opening angle	耗气量 (5 bar) Air consumption (5 bar)
	[mm.]	[Nm]	[Kg]	[bar]	[°]	[l]
RFM160.2-129-V/LS	160	3500	~ 77	4 - 8	15°-30°-43°-61° 76°-91°-107°-129°	42,2

最大负载扭矩 (5 bar)

Max. torque by load (5 bar)

打开角度 $\leq 92^\circ$ **410 Nm**

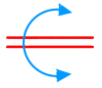
Opening angle $\leq 92^\circ$

打开角度 $> 92^\circ / \leq 121^\circ$ **300 Nm**

Opening angle $> 92^\circ / \leq 121^\circ$

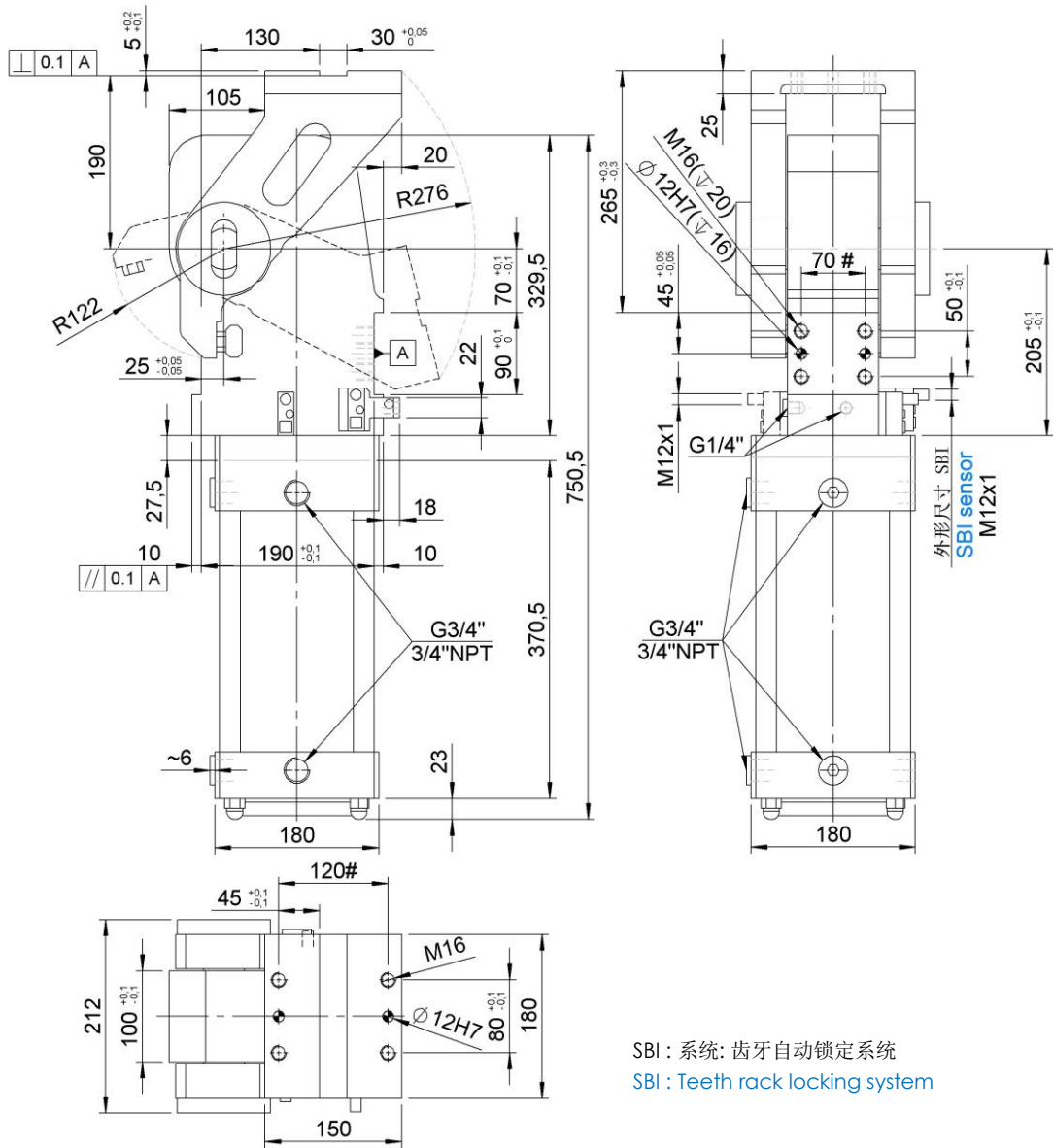
打开角度 $> 121^\circ$ **100 Nm**

Opening angle $> 121^\circ$



RFM160.2-76-O/LS-PX-I-G-X

翻转单元, D.160, SBI 锁紧系统系统, 打开角度可调, 标准水平对称夹臂
Swivel unit, D.160, SBI lock, Vario Op. Angle, Std. symm. horizontal



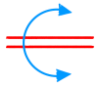
SBI : 系统: 齿牙自动锁定系统
SBI : Teeth rack locking system

公差 : 定位销孔 : ± 0.02 - 螺纹孔 : ± 0.1 / # Tolerances : dowel holes ± 0.02 - screw holes ± 0.1

类型 Type	缸径 Cylinder bore	保持力 Holding moment	重量 Weight	工作气压 Working pressure	打开角度 Opening angle	耗气量 (5 bar) Air consumption (5 bar)
	[mm.]	[Nm]	[Kg]	[bar]	[°]	[l]
RFM160.2-76-O/LS	160	3500	~ 77	4 - 8	15°-30°-43° 61°-76°	31,0

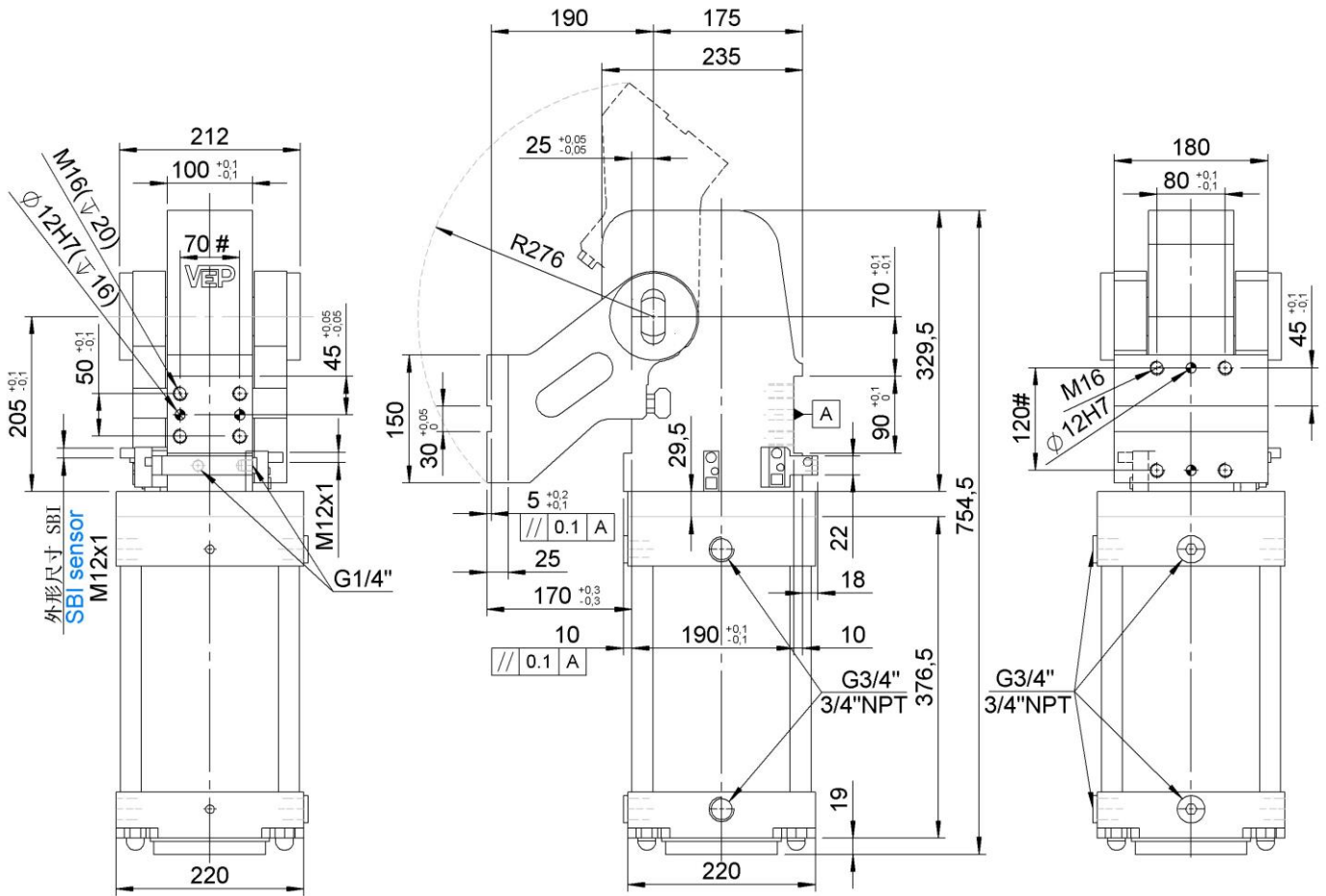
最大负载扭矩 (5 bar)
Max. torque by load (5 bar)

打开角度 $\leq 92^\circ$
Opening angle $\leq 92^\circ$ **410 Nm**



RFM200.2-129-V-PX-I-G-X

翻转单元, D.200, SBI 齿牙锁紧系统, 打开角度可调, 标准垂直夹臂
Swivel unit, D.200, SBI lock, Vario Op. Angle, Std. vertical



SBI : 系统: 齿牙自动锁定系统
SBI : Teeth rack locking system

公差 : 定位销孔 : ± 0.02 - 螺纹孔 : ± 0.1 / # Tolerances : dowel holes ± 0.02 - screw holes ± 0.1

类型 Type	缸径 Cylinder bore	保持力 Holding moment	重量 Weight	工作气压 Working pressure	打开角度 Opening angle	耗气量 (5 bar) Air consumption (5 bar)
	[mm.]	[Nm]	[Kg]	[bar]	[°]	[l]
RFM200.2-129-V	200	3500	~ 84	4 - 8	15°-30°-43°-61° 76°-91°-107°-129°	65,1

最大负载扭矩 (5 bar)

Max. torque by load (5 bar)

打开角度 $\leq 92^\circ$ **660 Nm**

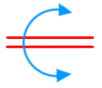
Opening angle $\leq 92^\circ$

打开角度 $> 92^\circ / \leq 121^\circ$ **480 Nm**

Opening angle $> 92^\circ / \leq 121^\circ$

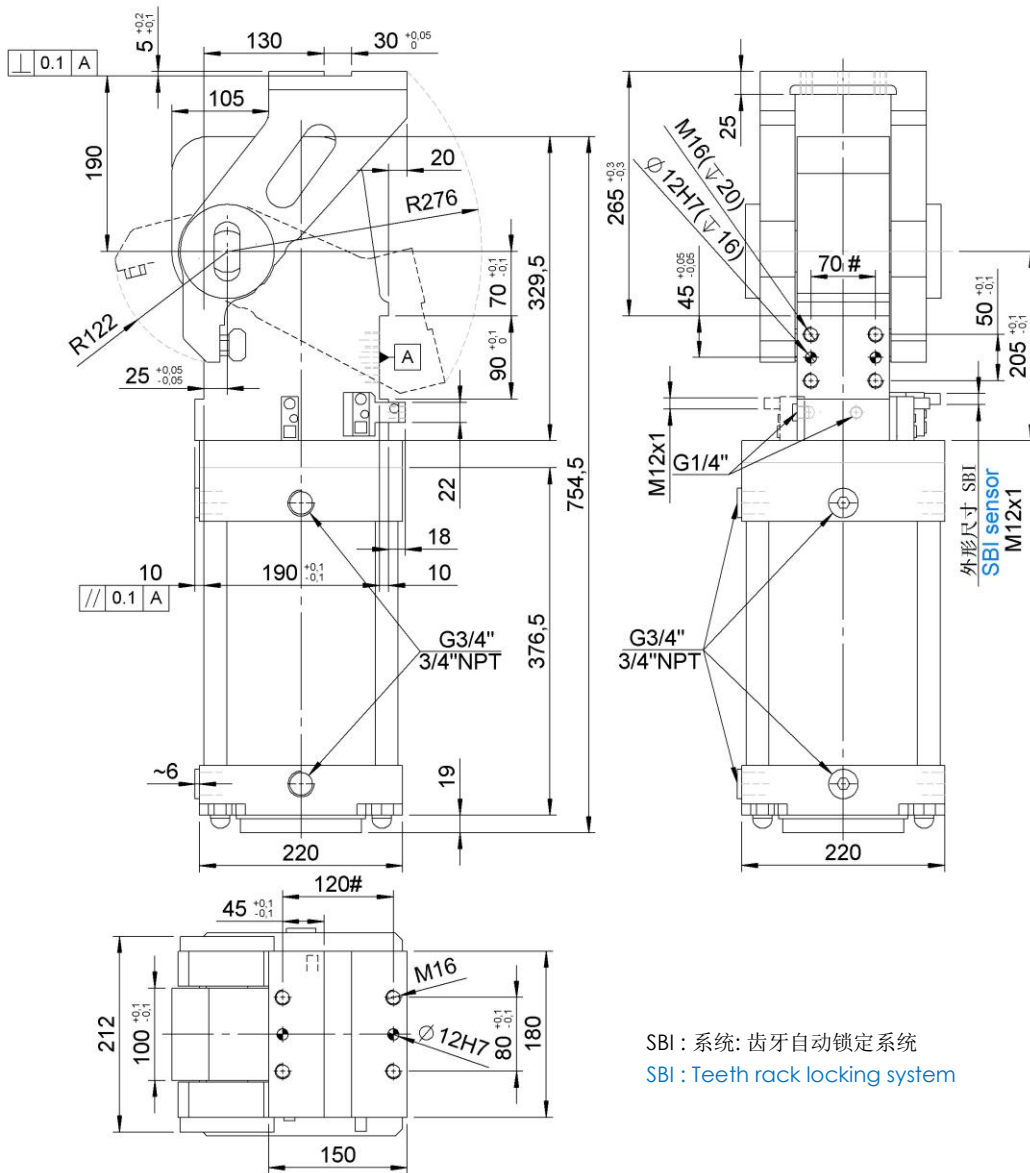
打开角度 $> 121^\circ$ **175 Nm**

Opening angle $> 121^\circ$



RFM200.2-76-O/LS-PX-I-G-X

翻转单元, D.200, SBI 齿牙锁紧系统, 打开角度可调, 标准水平对称夹臂
Swivel unit, D.200, SBI lock, Vario Op. Angle, Std. symm. horizontal



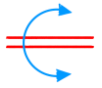
SBI : 系统: 齿牙自动锁定系统
SBI : Teeth rack locking system

公差 : 定位销孔 : ± 0.02 - 螺纹孔 : ± 0.1 / # Tolerances : dowel holes ± 0.02 - screw holes ± 0.1

类型 Type	缸径 Cylinder bore	保持力 Holding moment	重量 Weight	工作气压 Working pressure	打开角度 Opening angle	耗气量 (5 bar) Air consumption (5 bar)
	[mm]	[Nm]	[Kg]	[bar]	[°]	[l]
RFM200.2-76-O/LS	200	3500	~ 84	4 - 8	15°-30°-43° 61°-76°	31,0

最大负载扭矩 (5 bar)
Max. torque by load (5 bar)

打开角度 $\leq 92^\circ$ **660 Nm**
Opening angle $\leq 92^\circ$

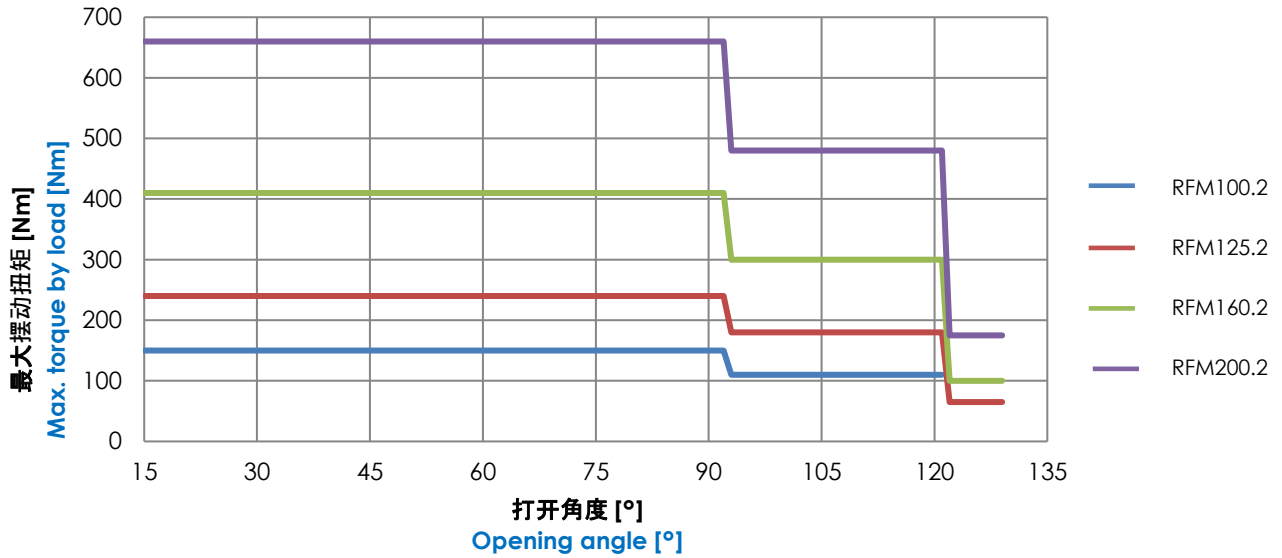


图表.

Diagrams.

最大负载图表 (5 bar)

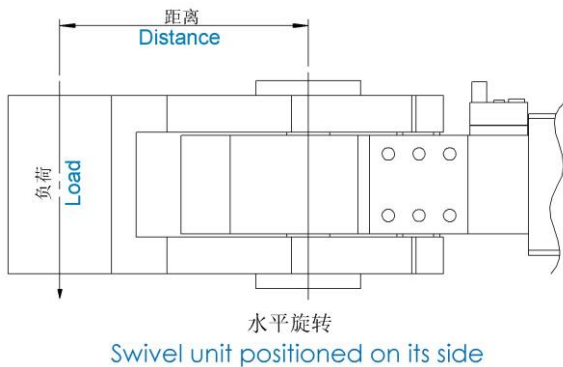
Diagrams of max. load (5 bar)



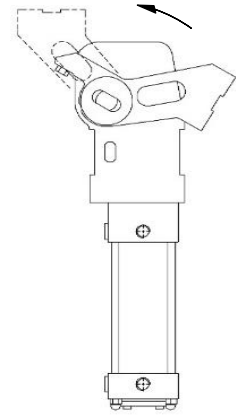
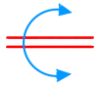
类型 Type	类型 Max. torque by load [Nm]								
	打开角度 ≤ 92° Opening angle ≤ 92°			打开角度 > 92° / ≤ 121° Opening angle > 92° / ≤ 121°			打开角度 > 121° Opening angle > 121°		
	4 bar	5 bar	6 bar	4 bar	5 bar	6 bar	4 bar	5 bar	6 bar
RFM100.2	120	150	190	90	110	130	45	55	65
RFM125.2	180	240	290	140	180	210	55	65	80
RFM160.2	320	410	500	260	300	360	85	100	125
RFM200.2	510	660	800	380	480	570	130	175	210

水平旋转最大负载(6 bar)

Max. applicable load with swivel unit positioned on its side (6 bar)



	最大负载扭矩(Nm) Max. torque by load (Nm)
	6 bar
RFM100.2	80
RFM125.2 RFM160.2 RFM200.2	200



耗时图表.

Time diagrams.

关闭阶段

Closing phase

工作气压 : 5 bar

夹臂类型 : O (见图片)

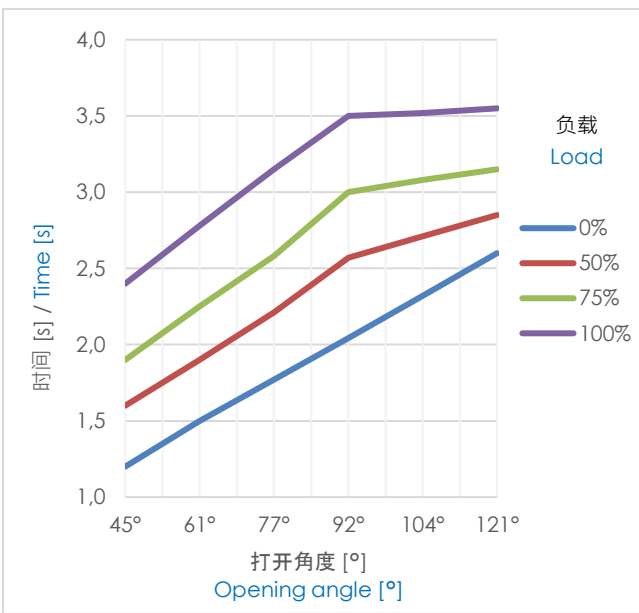
翻转单元位置 : 垂直 (见图片)

Working pressure : 5 bar

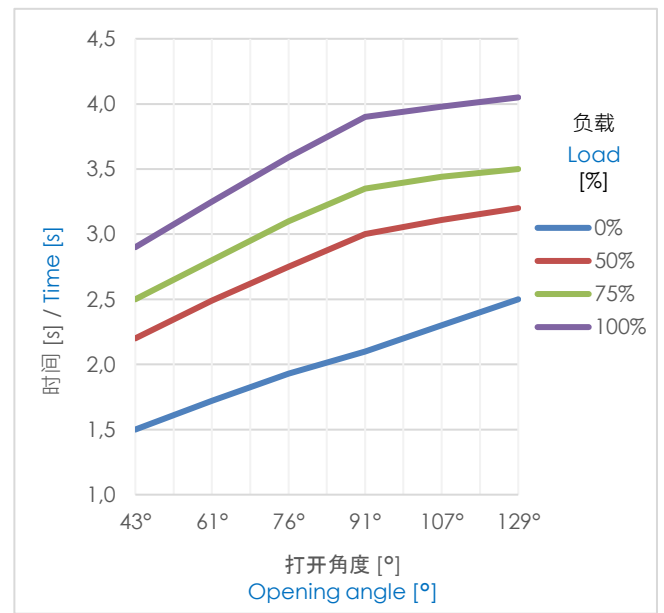
Arm type : O (see image)

Swivel unit position : vertical (see image)

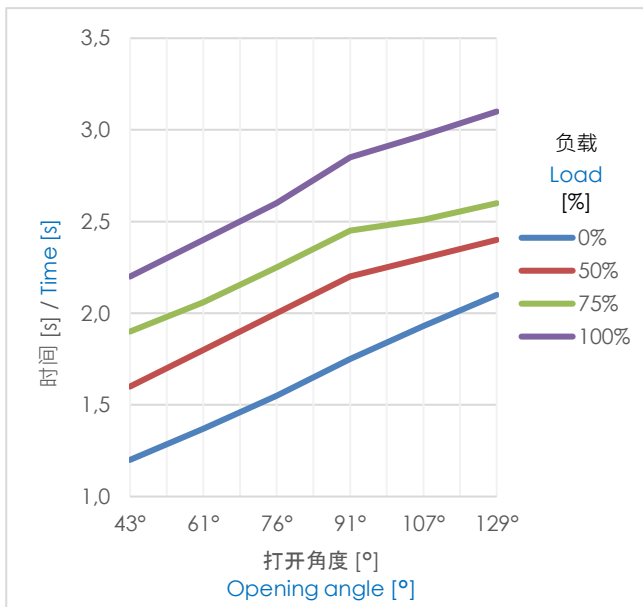
RFM100.2



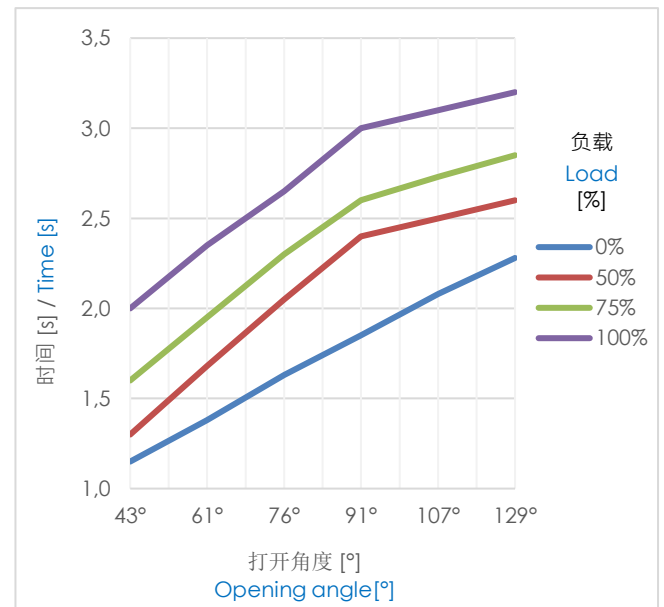
RFM125.2

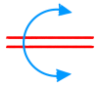


RFM160.2



RFM200.2





打开阶段

Opening phase

工作气压 : 5 bar

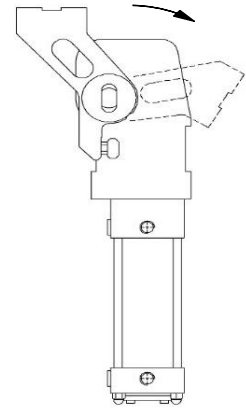
夹臂类型 : O (见图片)

翻转单元位置: 垂直 (见图片)

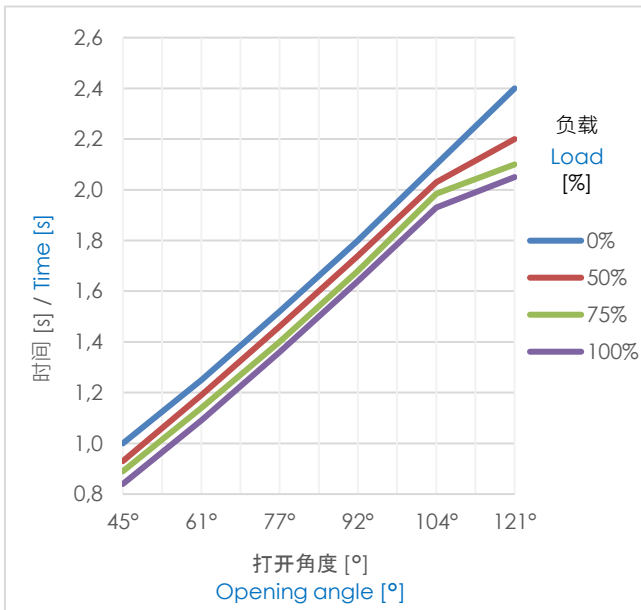
Working pressure : 5 bar

Arm type : O (see image)

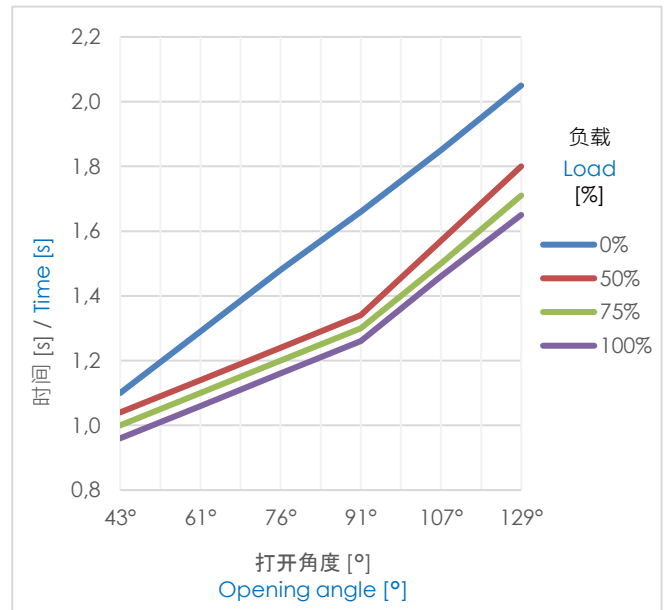
Swivel unit position : vertical (see image)



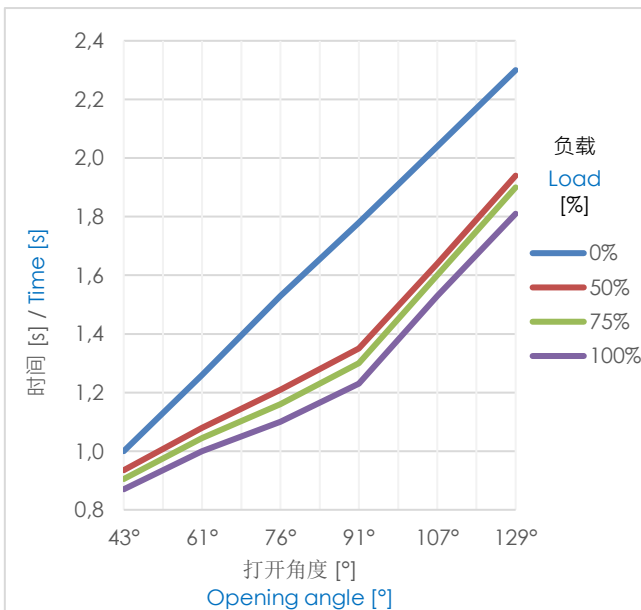
RFM100.2



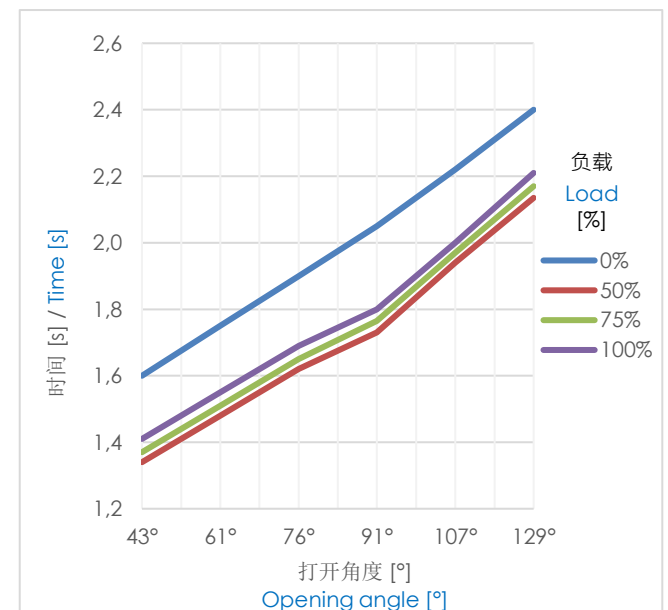
RFM125.2

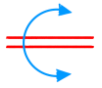


RFM160.2



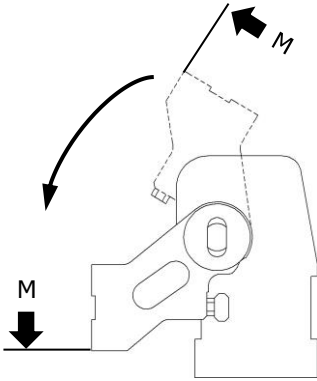
RFM200.2





为了避免角速度过高，请遵循表格中的打开信号和关闭信号的最小时间差。

To avoid elevated angular speed it's necessary to respect the min. times among the electric signal of opening and that of closing brought in tab.

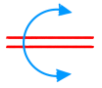


类型 Type	打开信号和关闭信号之间的最小时间差. Least time (s) between electric opening signal and closing one.				
	(6 bar)				
	45°	76°	91°	121°	129°
RFM100.2	0.6	0.9	1.0	1.2	1.5
RFM125.2	0.8	1.1	1.2	1.4	1.7
RFM160.2	0.9	1.2	1.3	1.5	1.8
RFM200.2	1.4	1.7	1.8	2.1	2.5



如果不遵守表格中的数值，可能导致设备受损。

If don't respect the value report in tab, the device may break



电感式传感器示意图.

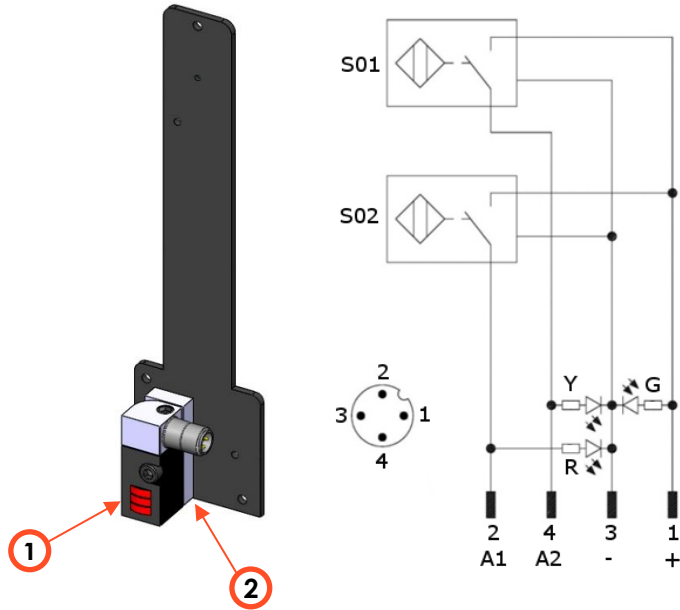
Diagram for inductive sensor.

技术参数：

- 输出类型：PNP
- 输入电压：10-30 VDC
- 最大换向电流：200 mA
- 耗电流：< 20mA
- 电压差：<2 V
- 工作温度：-25° / 70° C.

Technical data :

- Output type : PNP
- Feeding voltage : 10-30 VDC
- Max. commutating current : 200 mA
- Power supply : < 20 mA
- Voltage drop : < 2 V
- Temperature range : -25° / 70° C.



S02 = 关闭信号

S02 = Closing signal

R = 红色 LED / red LED

工作电压

Operating voltage

G = 绿色 LED / green LED

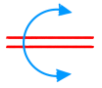
S01 = 打开信号

S01 = Opening signal

Y = 黄色 LED / yellow LED

RFM100.2			
电感式传感器类型 Inductive sensor type	功率放大器 Power amplifier 1	传感器卫星件 Sensor's satellite 2	完整传感器 Complete inductive sensor
VEP 传感器 带红色 LED VEP sensor with red LED	3/472		RFMSI – 1.2/L
Pepperl & Fuchs 传感器 带红色 LED Pepperl & Fuchs sensor with red LED	3/413	3/417	RFMSI – 1.2/A

RFM125.2	RFM160.2	RFM200.2				
电感式传感器类型 Inductive sensor type			功率放大器 Power amplifier 1	传感器卫星件 Sensor's satellite 2	完整传感器 Complete inductive sensor	
VEP 传感器 带红色 LED VEP sensor with red LED			3/472		RFM125.2	RFMSI – 125.2/L
					RFM160.2	RFMSI – 160.2/L
					RFM200.2	RFMSI – 200.2/L
Pepperl & Fuchs 传感器 带红色 LED Pepperl & Fuchs sensor with red LED			3/413		RFM125.2	RFMSI – 125.2/A
					RFM160.2	RFMSI – 160.2/A
					RFM200.2	RFMSI – 200.2/A



SBI 传感器示意图.

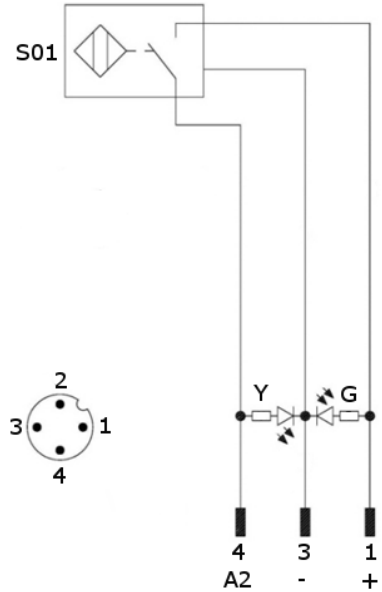
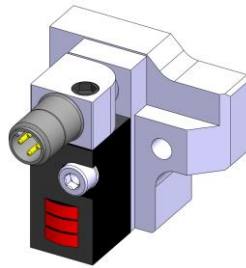
Diagram for SBI sensor.

技术参数：

- 输出类型：PNP
- 输入电压：10-30 VDC
- 最大换向电流：200 mA
- 耗电电流：< 25mA
- 电压差：<2 V
- 工作温度：-25° / 70° C.

Technical data :

- Output type: PNP
- Feeding voltage: 10-30 VDC;
- Max. commutating current: 200 mA;
- Power supply: < 25mA;
- Voltage drop: < 2 V;
- Temperature range: -25° / 70° C.



S01 = 打开信号

S01 = Opening signal

Y = 黄色 LED / yellow LED

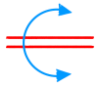
工作电压

Operating voltage

G = 绿色 LED / green LED

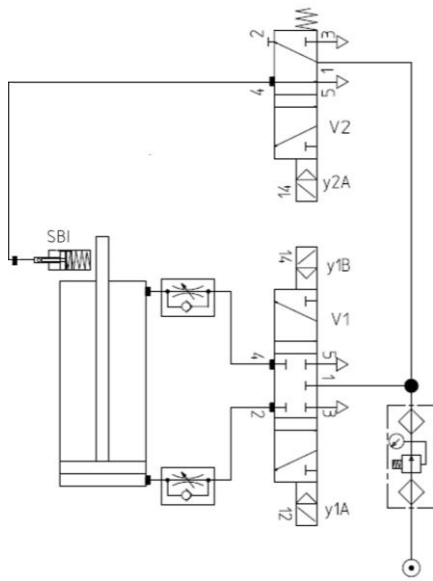
RFM100.2		
电感式传感器类型 Inductive sensor type	功率放大器 Power amplifier	完整传感器 Inductive sensor type
VEP 传感器 VEP sensor		RF1L – BIF
Pepperl & Fuchs 传感器 Pepperl & Fuchs sensor	3/413	RF1 – BIF

RFM125.2	RFM160.2	RFM200.2
电感式传感器类型 Inductive sensor type	功率放大器 Power amplifier	完整传感器 Inductive sensor type
VEP 传感器 VEP sensor		RF2L – BIF
Pepperl & Fuchs 传感器 Pepperl & Fuchs sensor	3/413	RF2 – BIF



气路图

Pneumatic plan

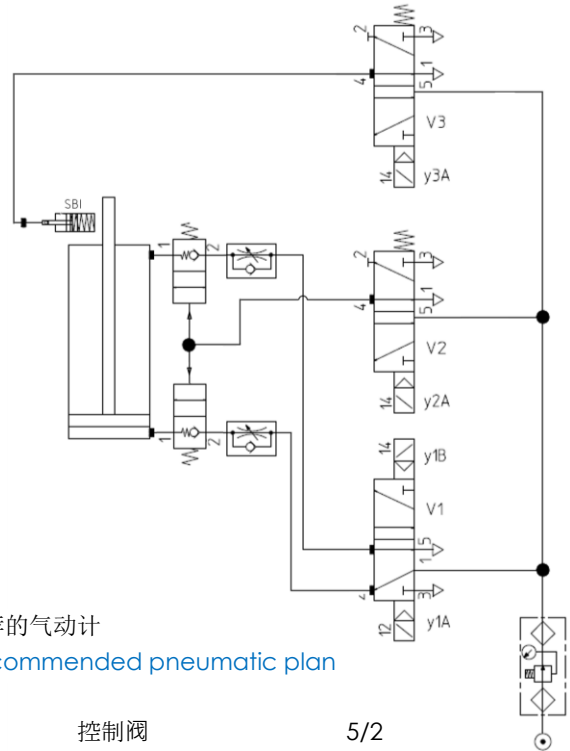


控制阀

5/3

Control valve

5/3



推荐的气动计

Recommended pneumatic plan

控制阀

5/2

Control valve

5/2

工作气压
Working pressure

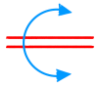
[bar]

4 – 8

耗气量

Air consumption

	Ángulo de apertura Opening angle	Consumo de aire Air consumption (5 bar)	Consumo de aire Air consumption (6 bar)
	[°]	[l]	[l]
RFM100.2	29°	5.9	6.9
	77°	10.3	12.1
	121°	14.3	16.7
RFM125.2	15°	7.9	9.2
	76°	18.0	21.0
	107°	22.4	26.2
	129°	24.7	28.8
RFM160.2	15°	14.2	16.6
	76°	31.0	36.2
	107°	38.5	44.9
	129°	42.2	49.3
RFM200.2	15°	20.8	24.3
	76°	47.4	55.3
	107°	59.2	69.1
	129°	65.1	76.0



RF.2 系列翻转单元其他打开角度 (打开角度固定不可调)

RF.2 unit additional opening angles (Fix-Not Adjustable)

如果 RF.2 系列的可选角度不符合客户设计的应用, 我们可以根据要求提供一个更多打开角度的 RF.2 单元。

以下附上 RF 系列可以打开角度的完整清单。

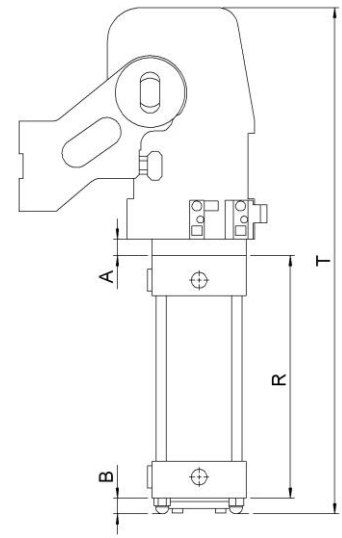
注意事项: RF 翻转单元角度不可调, RF 翻转单元气缸缸体长度根据打开角度而定。

In case of the available angles of the RFM.2 units are not in according to the application designed by the customer, on request, we can supply the RF.2 unit which allows to have a larger number of available opening angles. Herewith below the complete list of the RF opening angles.

Note: The RF unit doesn't have the opening angle easily adjustable. The cylinder length of the RF unit is in according to the opening angle.

RF100.2						
	V	V/LS	O	O/LS	R [mm.]	T [mm.]
15°	•	•	•	•	216	537,5
18°	•	•	•	•	220	541,5
22°	•	•	•	•	224	545,5
25°	•	•	•	•	228	549,5
29°	•	•	•	•	232	553,5
33°	•	•	•	•	236	557,5
37°	•	•	•	•	240	561,5
41°	•	•	•	•	244	565,5
45°	•	•	•	•	248	569,5
49°	•	•	•	•	252	573,5
53°	•	•	•	•	256	577,5
57°	•	•	•	•	260	581,5
61°	•	•	•	•	264	585,5
65°	•	•	•	•	268	589,5
69°	•	•	•	•	272	593,5
73°	•	•	•	•	276	597,5
77°	•	•	•	•	280	601,5
81°	•	•	•	•	284	605,5
85°	•	•	•	•	288	609,5
89°	•	•	•	•	292	613,5
92°	•	•	•	•	296	617,5
96°	•	•	•	•	300	621,5
100°	•	•	•	•	304	625,5
104°	•	•	•	•	308	629,5
108°	•	•	•	•	312	633,5
113°	•	•	•	•	316	637,5
117°	•	•	•	•	320	641,5
121°	•	•	•	•	324	645,5
127°	•	•	•	•	328	649,5
133°	•	•	•	•	332	653,5

RF125.2						
	V	V/LS	O	O/LS	R [mm.]	T [mm.]
15°	•	•	•	•	244,5	621
18°	•	•	•	•	248,5	625
21°	•	•	•	•	252,5	629
24°	•	•	•	•	256,5	633
27°	•	•	•	•	260,5	637
30°	•	•	•	•	264,5	641
33°	•	•	•	•	268,5	645
36°	•	•	•	•	272,5	649
40°	•	•	•	•	276,5	653
43°	•	•	•	•	280,5	657
47°	•	•	•	•	284,5	661
50°	•	•	•	•	288,5	665
54°	•	•	•	•	292,5	669
58°	•	•	•	•	296,5	673
61°	•	•	•	•	300,5	677
65°	•	•	•	•	304,5	681
69°	•	•	•	•	308,5	685
72°	•	•	•	•	312,5	689
76°	•	•	•	•	316,5	693
80°	•	•	•	•	320,5	697
83°	•	•	•	•	324,5	701
87°	•	•	•	•	328,5	705
91°	•	•	•	•	332,5	709
95°	•	•	•	•	336,5	713
99°	•	•	•	•	340,5	717
103°	•	•	•	•	344,5	721
107°	•	•	•	•	348,5	725
112°	•	•	•	•	352,5	729
116°	•	•	•	•	356,5	733
122°	•	•	•	•	360,5	737
129°	•	•	•	•	364,5	741



	A [mm.]	B [mm.]
RF100.2	20	19
RF125.2	24	23
RF160.2	27,5	23
RF200.2	29,5	19

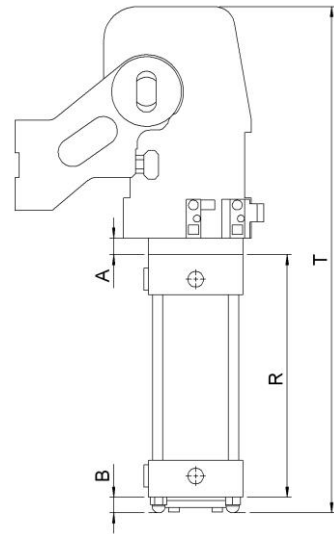


RF160.2

	V	V/LS	O	O/LS	R [mm.]	T [mm.]
15°	•	•	•	•	250,5	630,5
18°	•	•	•	•	254,5	634,5
21°	•	•	•	•	258,5	638,5
24°	•	•	•	•	262,5	642,5
27°	•	•	•	•	266,5	646,5
30°	•	•	•	•	270,5	650,5
33°	•	•	•	•	274,5	654,5
36°	•	•	•	•	278,5	658,5
40°	•	•	•	•	282,5	662,5
43°	•	•	•	•	286,5	666,5
47°	•	•	•	•	290,5	670,5
50°	•	•	•	•	294,5	674,5
54°	•	•	•	•	298,5	678,5
58°	•	•	•	•	302,5	682,5
61°	•	•	•	•	306,5	686,5
65°	•	•	•	•	310,5	690,5
69°	•	•	•	•	314,5	694,5
72°	•	•	•	•	318,5	698,5
76°	•	•	•	•	322,5	702,5
80°	•	•	•	•	326,5	706,5
83°	•	•	•	•	330,5	710,5
87°	•	•	•	•	334,5	714,5
91°	•	•	•	•	338,5	718,5
95°	•	•	•	•	342,5	722,5
99°	•	•	•	•	346,5	726,5
103°	•	•	•	•	350,5	730,5
107°	•	•	•	•	354,5	734,5
112°	•	•	•	•	358,5	738,5
116°	•	•	•	•	362,5	742,5
122°	•	•	•	•	366,5	746,5
129°	•	•	•	•	370,5	750,5

RF200.2

	V	V/LS	O	O/LS	R [mm.]	T [mm.]
15°	•	•	•	•	256,5	634,5
18°	•	•	•	•	260,5	638,5
21°	•	•	•	•	264,5	642,5
24°	•	•	•	•	268,5	646,5
27°	•	•	•	•	272,5	650,5
30°	•	•	•	•	276,5	654,5
33°	•	•	•	•	280,5	658,5
36°	•	•	•	•	284,5	662,5
40°	•	•	•	•	288,5	666,5
43°	•	•	•	•	292,5	670,5
47°	•	•	•	•	296,5	674,5
50°	•	•	•	•	300,5	678,5
54°	•	•	•	•	304,5	682,5
58°	•	•	•	•	308,5	686,5
61°	•	•	•	•	312,5	690,5
65°	•	•	•	•	316,5	694,5
69°	•	•	•	•	320,5	698,5
72°	•	•	•	•	324,5	702,5
76°	•	•	•	•	328,5	706,5
80°	•	•	•	•	332,5	710,5
83°	•	•	•	•	336,5	714,5
87°	•	•	•	•	340,5	718,5
91°	•	•	•	•	344,5	722,5
95°	•	•	•	•	348,5	726,5
99°	•	•	•	•	352,5	730,5
103°	•	•	•	•	356,5	734,5
107°	•	•	•	•	360,5	738,5
112°	•	•	•	•	364,5	742,5
116°	•	•	•	•	368,5	746,5
122°	•	•	•	•	372,5	750,5
129°	•	•	•	•	376,5	754,5



	A [mm.]	B [mm.]
RF100.2	20	19
RF125.2	24	23
RF160.2	27,5	23
RF200.2	29,5	19

减震，外部停止向导

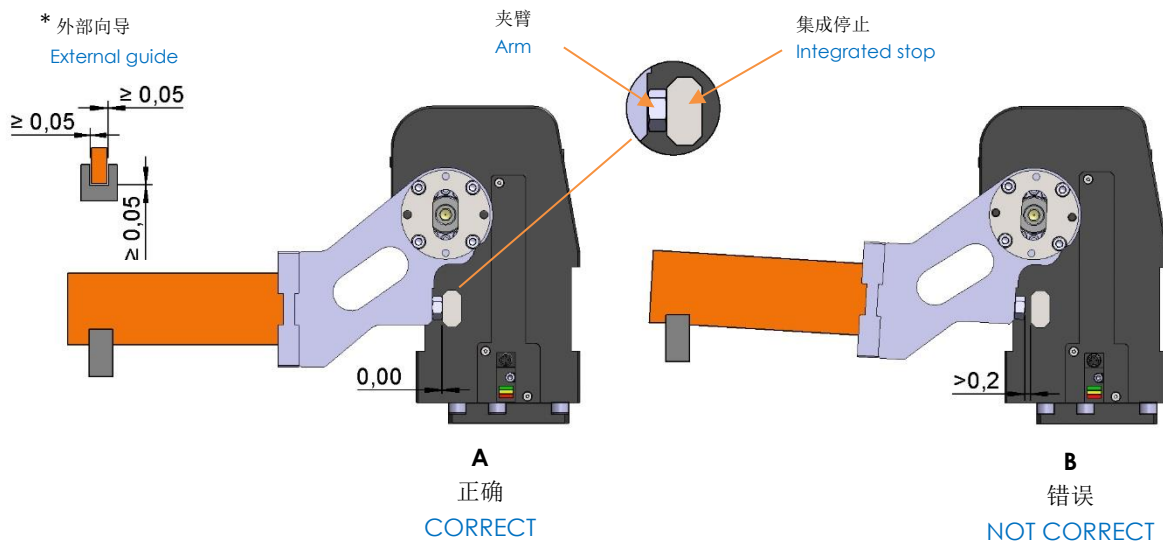
Shock absorbers, stops end external guides.

请确保翻转单元完成了整个气缸行程直到关闭位置 (0°)。任何外部物体的干涉可能对翻转单元及安装在单元上的装备造成严重损坏。

Make sure that the swivel unit makes the complete stroke until the closing position is reached (0°). Any interference with external bodies can cause serious damage to the device and to the equipment mounted on it.

不建议使用外部限位器和减震器，因为它们会对装置的使用寿命产生负面影响。

The use of external stops and shock absorbers is not recommended as they can have negative effects on the life of the unit.



正确使用 (图 A):

CORRECT USE (picture A):

正确使用集成限位块。夹臂到限位块的距离 = 0。

Integrated stop is used. The distance between the arm and the integrated stop = 0.

错误使用 (图 B):

WRONG USE (picture B):

使用外部限位达不到 0° 位置。(夹臂到限位块的距离大于 0,2mm)。

External stops are used, that do not allow to reach the 0° position. (The distance between the arm and the integrated stop is greater than 0,2 mm.)

如果要使用外部导向, 变形保证以下机构要素:

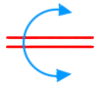
- 翻转单元已经完全达到夹紧位置
- 必须保持以上措施 (* 外部向导)
- 禁止将其当作外部限位使用

If external guides are used, the following points must be guaranteed :

- The swivel unit must fully reach the closed position
- The above measures must be maintained (* external guides)
- They must not be used as external stops

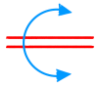
如果不遵守上述要点, 我们保留取消质保的权利。

If the points indicated above are not respected, we reserve the right to void the warranty.

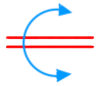


备件. Spar parts

配套元件 Kit	图片 Picture	描述 Description		代号 Article
机械单元 Mechanical unit		机械单元 Mechanical unit	RFM100.2	MPRFM1.2
			RFM125.2	MPRFM2.2-125
			RFM160.2	MPRFM2.2-160
			RFM200.2	MPRFM2.2-200
接近开关 Proximity switch		VEP 电感式传感器 Proximity switch VEP	RFM100.2	RFMSI - 1.2/L
			RFM125.2	RFMSI -125.2/L
			RFM160.2	RFMSI -160.2/L
			RFM200.2	RFMSI -200.2/L
		P&F 电感式传感器 Proximity switch P&F	RFM100.2	RFMSI - 1.2/A
			RFM125.2	RFMSI -125.2/A
			RFM160.2	RFMSI - 160.2/A
			RFM200.2	RFMSI - 200.2/A
外形尺寸 Inductive sensor		外形尺寸 (VEP) inductive sensor (VEP)	RFM100.2 RFM125.2 / 160.2 / 200.2	3/472
功率放大器 Power amplifier		功率放大器带红色 LED (P&F) Power amplifier red LED (P&F)	RFM100.2 RFM125.2 / 160.2 / 200.2	3/413
传感器附件 Sensor's satellite		传感器附件(P&F) Sensor's satellite (P&F)	RFM100.2 RFM125.2 / 160.2 / 200.2	3/417
SBI传感器 SBI sensor		SBI 传感器 (VEP) SBI inductive sensor (VEP)	RFM100.2	RF1L-BIF
			RFM125.2 / 160.2 / 200.2	RF2L-BIF
		SBI 传感器 (Pepperl & Fuchs) SBI inductive sensor (Pepperl & Fuchs)	RFM100.2	RF1-BIF
			RFM125.2 / 160.2 / 200.2	RF2-BIF



夹臂组装 Arm assembly		夹臂组装类型 V Arm assembly type V	RFM100.2	SPMLM-1V
			RFM125.2 / 160.2 / 200.2	SPMLM-2V
		夹臂组装类型 V/LS Arm assembly type V/LS	RFM100.2	SPMLM-1V/LS
			RFM125.2 / 160.2 / 200.2	SPMLM-2V/LS
		夹臂组装类型 O Arm assembly type O	RFM100.2	SPMLM-1O
			RFM125.2 / 160.2 / 200.2	SPMLM-2O
		夹臂组装类型 O/LS Arm assembly type O/LS	RFM100.2	SPMLM-1O/LS
			RFM125.2 / 160.2 / 200.2	SPMLM-2O/LS
机械单元带夹臂和气缸连接适配器 Mechanical unit with arms and cylinder adapter		机械单元带 V 型夹臂和气缸连接适配器 Mechanical unit with arms and cylinder adapter type V	RFM100.2	MPRFM1.2-V-100
			RFM125.2	MPRFM2.2-V-125
			RFM160.2	MPRFM2.2-V-160
			RFM200.2	MPRFM2.2-V-200
		机械单元带 V/LS 型夹臂和气缸连接适配器 Mechanical unit with arms and cylinder adapter type V/LS	RFM100.2	MPRFM1.2-V/LS-100
			RFM125.2	MPRFM2.2-V/LS-125
			RFM160.2	MPRFM2.2-V/LS-160
			RFM200.2	MPRFM2.2-V/LS-200
		机械单元带 O 型夹臂和气缸连接适配器 Mechanical unit with arms and cylinder adapter type O	RFM100.2	MPRFM1.2-O-100
			RFM125.2	MPRFM2.2-O-125
			RFM160.2	MPRFM2.2-O-160
			RFM200.2	MPRFM2.2-O-200
		机械单元带 O/LS 型夹臂和气缸连接适配器 Mechanical unit with arms and cylinder adapter type O/LS	RFM100.2	MPRFM1.2-O/LS-100
			RFM125.2	MPRFM2.2-O/LS-125
			RFM160.2	MPRFM2.2-O/LS-160
			RFM200.2	MPRFM2.2-O/LS-200



密封套装 Seals kit		气缸密封组件 Kit pneumatic cylinder seals	RFM100.2	SPCSR-100
			RFM125.2	SPCSR-125
			RFM160.2	SPCSR-160
			RFM200.2	SPCSR-200
气缸 (Gas = G) (NPT = N) Pneumatic Cylinder (Gas = G) (NPT = N)		气缸 Pneumatic cylinder unit	RFM100.2	SPRM100 (G)
			RFM125.2	SPRM125 (G)
			RFM160.2	SPRM160 (G)
			RFM200.2	SPRM200 (G)
夹紧块 Clamping block		夹紧块 Clamping block	RFM100.2	3/377
			RFM125.2 / 160.2 / 200.2	3/388

